

Donations welcome

The Pinnacle



**A Magazine for the parish of
Kildwick, Cononley and Bradley**

*The Churches of St Andrew's,
St John's and St Mary's*

St John's is a Local Anglican/Methodist Ecumenical Partnership

March 2020


Oakhouse —foods—

Why choose Oakhouse?

- ✓ Over 400 delicious frozen meals and desserts from £2.85
- ✓ We deliver weekly in your area
- ✓ Order by phone, post, website or with our helpful drivers
- ✓ Pay by cheque, cash, card or Paypal
- ✓ We also supply a range of over 250 grocery products.

CALL US TODAY

for your **FREE** brochure

 **01756 796 336**
(LOCAL RATE)

 **oakhousefoods.co.uk**

Oakhouse Foods, The Sidings
Business Park, Skipton,
North Yorkshire, BD23 1TB

ArmstrongLuty SOLICITORS

The Personal Injury Law Partnership



your local experts
for *just* compensation
talk to us *face to face*

Kipling House, 24 Otley Street,
Skipton, North Yorkshire, BD23 1EW
Call Andrew Armstrong or Nick Luty
on 01756 799977



RCVS
ACCREDITED
PRACTICE

Caring for
your pet **24/7**

73 Otley Road Skipton BD23 1HJ
T: 01756 793224

www.kingswayvets.co.uk


KINGSWAY
VETERINARY HOSPITAL

Small world

At the time of writing, one of the biggest current news topics is the spread of the COVID-19 virus, a highly infectious form of coronavirus. The first early reports trickled out in December of cases of a new form of respiratory disease discovered in the Wuhan province of China. Since then, the number of cases has grown significantly. The greatest number remain in China and the Far East, but the virus has been diagnosed in (so far) 40 territories, including the UK, with clusters in countries including Iran and Italy.

The threat posed by the virus in this country has been deemed 'moderate', and there is good advice available on how we can help to protect ourselves and our communities. The Church of England has issued its own guidance to parishes on how to respond, and more information can be found at <https://tinyurl.com/cofecovid-19>

As I've followed the development of this story, I've been struck by how events like this make the world seem very small. Events which start off half a world away and seem very remote, can in a very short space of time draw close to home. Travel to exotic places is so much easier and more common than it used to be. We return home with memories to cherish and expanded

horizons – but it's easy for us to bring less desirable mementos too.

The 17th century poet and priest John Donne

f a m o u s l y

wrote, 'No man is an island.'

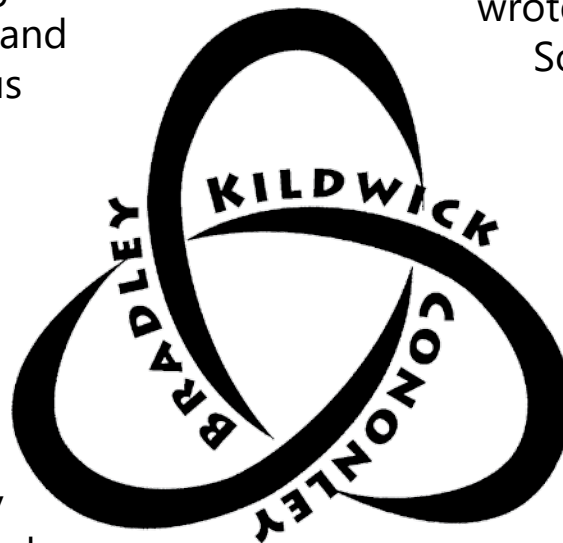
Sometimes we forget just how connected we are. We need to be sensible and take the public health advice offered (and with due regard to our own vulnerabilities), without becoming unduly anxious. This current outbreak reminds us of our common humanity,

irrespective of national borders, economic or social status, or anything else that usually divides us. St Paul describes the church as 'the body of Christ' – one body, made of many parts, or members. He says, "If one member suffers, all suffer together with it; if one member is honoured, all rejoice together with it" (1 Cor. 12.26). The same could be said of our world: if part of it suffers, we are all affected. Let's not fear unnecessarily – but let's all play our part in seeking the health and wellbeing of everyone.

With every blessing



Julie



Is this the end of Tea and Scones?

An important ministry

We have served Tea and Scones in St Andrew's Parish Rooms for many years. It has been a great outreach opportunity to the local community, visitors and pilgrims alike. It has also raised between £500 and £600 a year for the ministry of the church.



Many of our regulars look forward to the start of the season and it is good to welcome them as friends each May. We often have walkers and cyclists delighted to have found somewhere to refresh themselves as they walk/bike on the canal or up to the moor. Many boaters call in and often take a bag of scones to eat later!

Last season we introduced clotted cream as well as jam and it was very well received!

Being a host is not onerous, you do not have to be an expert scone baker. Often someone will bake for you or you can always get them from Aldi and hide the wrappers!!!

For many years I made sure the rota is covered and I've been the 'back stop' when no one volunteered. Now that I am not living 'on the doorstep' I can no longer do this. I am very happy to cover one Sunday a month and bake extra scones, given sufficient notice.

Please do have a chat with me if you can help. It would be a great shame if we lose this wonderful outreach opportunity. Now that we are one parish I would encourage our friends in Bradley and Cononley to think about coming to help, we get lots of visitors from both these villages!

Lesley Hudson



Re-launching the History Group?

There are plans to possibly restart regular meetings of the Farnhill & Kildwick History Group.

With that in mind, those who are keen are invited to attend a meeting at the Institute at 7.00pm on Tuesday March 3rd; to discuss how a re-launched History Group might work.

In the meantime, people might like to think about the sorts of things they would like the Group to research. Bring your ideas to the meeting.

Cononley WI



The weather has certainly come with a vengeance with the wind, rain and snow showers, but we have miniature daffodils and snowdrops in our gardens to keep us cheerful.

At our February meeting our guest speaker couldn't make it so Elizabeth Calvert and I did a talk on our nursing career, I must be honest – I think it was enjoyed by everyone!

In March we have a team from Waitrose coming to talk to us on Wine and Cheese tasting. I am sure it will be enjoyed by everyone.

Don't forget we meet in the Village Institute the first Thursday in the month at 7-30pm where everyone will receive a warm welcome particularly new members and visitors.

Pauline Link – President WI Cononley

Cononley Singers

On Palm Sunday we are taking part in the celebrations at St. John's to mark the official opening of the building after the re-development. The service starts at 3.00pm and all are welcome so come and see what has been done and listen to us sing.

We are looking to add to the Singers and anyone who thinks they would enjoy singing in the group, please contact Tony and he will be pleased to tell you more about rehearsal times etc.

Ruby

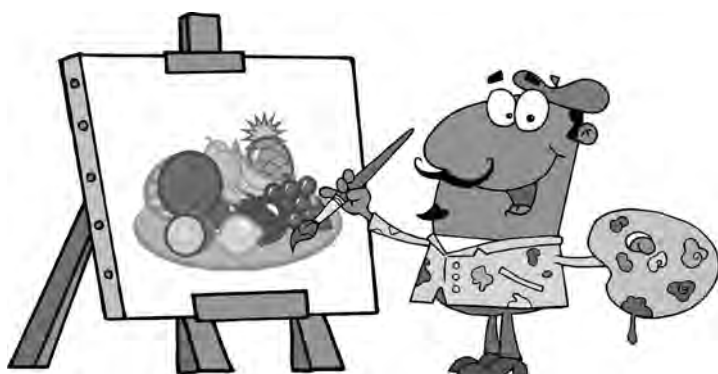
Cononley Art Group

We are very pleased to report that lately we have had a lot of new members joining the group and so our member led corner workshops are very popular. Derek took a watercolour corner last week and all who did it declared it most helpful and inspiring and seeing as it is my turn next month I will have to be on my toes. We also have a professional workshop too which will be in pastel,

the members will be proficient in the medium and most likely have some dirty hands as well.

Next month we have an excursion to Harrogate where there is a Turner exhibition at the Mercer gallery as well as our usual Monday meetings.

Ruby



St John's United Church, Cononley



Saturday 21st March 2020

Church Warming

Church open 11am - 2pm

Please come and join us for

**homemade soup
drink and cake**

(donations welcome)



And see the newly refurbished church

**Cake stall by Skipton Building Society for
refurbishment fund**

Everyone is welcome

St.John's Church-Warming

As many will know we are having a St. John's Church Warming lunch on Saturday 21st March and Jean and I are having a stall for craft and new items which we hope will sell. If you can contribute anything such as sweets, biscuits or perfumery and toiletries we would be very pleased to sell them.

Ruby

**THIRD
SUNDAY
FOURTH
SUNDAY**

At Kildwick

At Cononley

Come and enjoy one of our two
"different" services.

With an informal structure and good
cake, we'd love to welcome you!



Jacqueline's

Ladies & Gents

HAIR STYLIST

123 Main Street, Cononley

Tel: 01535 636317

 **the
brace place**
Giving you confidence to smile

 **BDA.**
goodpractice

**Braces for children and
Adults**

**Professional
Tooth whitening**

2, Albert Road, (off Holme Lane), Crosshills, Keighley BD20 7LE
Telephone 01535 630123

All types of
Clocks and Barometers
considered for
Service and Repair



Colin S. Nesbitt

Tel 01756 751946

Mob 07719943424

Email simsnesbitt@live.co.uk



CONONLEY BUSINESS PARK

CONONLEY

WEST YORKSHIRE

BD20 8LG

TEL 01535 632391

07890 799558

PETER IRWINS

SERVICING, AIR-CONDITIONING, TYRES, MOTs,
DIAGNOSTICS, LASER WHEEL ALIGNMENT



The Kildwick Kwagmire

How many of you have recently walked past the main church door towards the school? It can be a bit of a daunting prospect! You'll be more familiar with the state of the church car park. Clearing the leaf mould from there is a major task; but we're getting there slowly (the recent storms have helped too!)

But the path to school needs more serious attention! You may not use it, but there is heavy traffic as school starts and finishes. We are asking for help!

- **We need help** with estimating the material we need and how best to prepare the path for its new top coat.
 - **We need help** with sourcing the materials. (With the limited access to the churchyard, it may need to be delivered in bags.)
 - **We need help** to pay for it! The PCC will struggle to fund this project on its own. *Without some financial help, we'll need to revert to dumping a few bags on the worst spots.*
 - **We need help** to move aggregate! We hope a good team of school parents with wheelbarrows will help with this but...
 - **We need help** from the congregation to provide the tea, coffee, cakes (and sympathy) for the workers!
- And maybe join us in a pint at the White Lion afterward?*

If you can offer help of any sort, please contact Chris Wright. We're still at an early stage in the project. Certainly not dates and times yet!

Every member of St Andrew's can help with this...

If welly boots and shovels aren't your thing, your welcome and hospitality to the workers most definitely can be!

Interim Vicar	The Revd Julie Bacon revjulesbacon@gmail.com	01274 405170
Reader	Cononley: Mr Kevin Wood	633950
Church Wardens	Kildwick: Mrs Joan McCartney Cononley: <i>vacant</i> Bradley: Mr Robert Hall	635736 635549
PCC Vice Chair	Mr Tim Chapman	635063
PCC Secretary	Mrs Jill Wright jill@woodchipcomputers.co.uk	634526
PCC Treasurer	Mrs Janet Wade	632369
Planned Giving & Gift Aid Secretaries	Kildwick: Mrs Brenda Brock Cononley: Mrs Janet Wade	633938 632369
Safeguarding Officer	Mrs Janet Clifford	631653
Parish Group Leaders	<i>The titles of our new Parish Groups, along with their leaders, will appear here once they have been created. Come along to the open meeting on 7th March to find out more!</i>	
Bell Tower & MiniRingers	Kildwick: Mr Chris Wright	634526
CHUFFS (Church for the u.5's)	Kildwick: Mrs Lesley Hudson	523291
Church Magazine magazine@ kcbchurches.org.uk	Kildwick: Mr Chris Wright Kildwick: Mrs Sylvia Clarke Cononley: D & E Clarke Cononley: Mrs Doreen Ratledge Cononley: Mrs Ruby Sedgwick Bradley: Mrs Andrea Baxter	634526 636070 633956 633831 632422 630245
CDFC Representatives	Kildwick: Mrs Christine Anderton Kildwick: Miss Glyn Evans	633596 630735
Flower Rota	Kildwick: Mrs June Whitaker	655320
Music Group	Kildwick: Mr John Hudson	523291
Organist/Choir Leader	Kildwick: Miss Glyn Evans	630735
Parish Room Bookings	Kildwick: Mrs Libba Utley	631631
Pastoral Care	Kildwick: Mrs June Whitaker	655320

email: Contact the Pinnacle editorial team at **magazine@kcbchurches.org.uk**

Services for March

Date	Time	Church	Readings for Eucharist
1st March 1st Sunday of Lent	9.30am 11.00am 11.00am	St Mary's, Bradley St Andrew's Kildwick St John's Cononley	Genesis 2.15-17,3.1-7 Matthew 4.1-11
8th March 2nd Sunday of Lent	9.30am 11.00am	St Andrew's Kildwick St John's Cononley	Romans 4.1-5,13-17 John 3.1-7
15th March 3rd Sunday of Lent	9.30am 11.00am 11.00am	St Mary's, Bradley St Andrew's, Kildwick St John's Cononley	Exodus 17.1-7 John 4.5-42
22nd March Mothering Sunday	9.30am 11.00am 4.00pm	St Mary's, Bradley St Andrew's Kildwick St John's Cononley	Exodus 2.1-10 John 19.25b-27
29th March 5th Sunday of Lent	9.30am	Joint Service at St. John's, Cononley	Exodus 37.1-14 John 11.1-45

On the 5th April at 3pm at St John's, Cononley
Rededication service with the Bishop of Bradford and Cononley Singers

APCM

I've got exciting news! The Church Representation Rules have changed!

One spin-off means we can delay the Annual Church Meetings till the end of May – and this year, we're taking full advantage of this. Our APCM is on...

Pentecost Sunday, 31st May 2020

This is a "Fifth Sunday" and we will all meet together at St Andrew's in Kildwick for our Pentecost worship followed by the two meetings.

Two meetings? One is of all parishioners, to elect the churchwardens.
The other is a church meeting to discuss everything else

Rotas for March

Notes	Kildwick Readers	Kildwick Intercessor	Kildwick Communion
<i>Methodist-led service at Cononley</i>	Brenda Brock Lesley Bannister	Sue Hargreaves	Sandie and Jill
	Christine Anderton Tim Chapman	Jill Wright	Christine and Peter
2.30pm Messy Church at Kildwick	<i>Morning Worship at Kildwick</i>		
<i>Morning Worship at Cononley</i>	Sylvia Clark Kath Morris	Lesley Hudson	Tim and Sue
5th Sunday – Joint Service at St. John's, Cononley			



St Andrew's Messy Church



Messy Church service continues
on every "third Sunday" in the month.
The next ones will be on Sundays 15th March and
19th April from 2.30–4.30pm.

Messy Church is an opportunity for families to learn about God through craft, stories and singing in a relaxed friendly atmosphere. It lasts for about 2 hours and is suitable for all ages and concludes with refreshments.

Regular Events in Kildwick, Cononley and Bradley

Monday	9.30am	Pre-School Music Group	Bradley Village Hall
Monday	2.00pm	Cononley Arts Club	Cononley Institute
Monday	8.00pm	Ditty Nitty Craft Club	Slater's Arms, Bradley
Tuesday	10.00am <i>Not holidays</i>	<i>Chuffs Fun for pre-school children and their grown-ups!</i>	Kildwick Parish Rooms
Tuesday	7.15pm	Yoga Class	Bradley Village Hall
Tuesday	7.15pm	Choir practice	Kildwick Parish Rooms
Wednesday	9.30am	Midweek Eucharist	Kildwick Parish Rooms
Wednesday	7.45pm	Cononley Singers	Cononley New Inn
Thursday	9.30am	Toddlers Group	Bradley Village Hall
Thursday	3.30pm <i>Not holidays</i>	MiniRingers Club	Kildwick Tower
Thursday	7.00pm	Bell Handling Practice	Kildwick Tower
Thursday	7.30pm	Bell Ringing Practice	Kildwick Tower
Thursday	7.30pm	Whist Drive	Bradley Village Hall
Friday	9.00am	Pilates	Cononley Institute
Friday	10.00am	Yoga Class	Bradley Village Hall
Friday	1.30pm	Keep Fit	Cononley Institute



Farnhill Parish Council

At the meeting held on the 23rd January:

- Jeni Mcfarlane was co-opted onto the Council.
- Work continues to repair the wall at the Arbour and to remove graffiti at the Pinnacle. More engagement with the community may reduce the graffiti problem.
- Some litter and grit bins have been replaced
- A new public footpath (to Hanover Street) is to be added to the map
- Concerns were raised about the amount of light pollution in the village.

What's on at the Institute?

*The following events will take place at Kildwick & Farnhill Institute,
Main Street, Farnhill.*

Charity in a War Zone

Friday 6th March, 7.00pm

a talk by Maggie Tookey; Admission £5, incl. refreshments
Farnhill's Maggie Tookey will talk about her work supporting refugees in war zones around the world, in her role as field director of the charity Edinburgh Direct Aid.

Regular monthly coffee morning,

Saturday 14th March, 10.00 - 11.30am

*Come along and meet up with your friends and neighbours for a chat.
Cake stall / Charity raffle, in aid of Yorkshire Air Ambulance.*

Beetle Drive

Friday 20th March, 7.00pm

Admission, £5 per person or £10 for families, will include refreshments.
An evening of Beetle, a fun game for all ages. Don't worry if you've never played the game before, full instructions (such as they are) will be given– it's easy and fun.

**Flapjack
Friday**

Every Friday during term time, call in at
St Andrew's and enjoy a cup of coffee, a
flapjack and a natter!

Reopens on 20th March

**Drop off the kids ...
– and call into church
any Friday ...**

**... for a hot drink
and a piece of flapjack
Stay for a chat if you can!**

KCB prayers

We meet together for "KCB prayers" each month to pray for an hour for our churches and communities as well as for wider concerns.

We normally gather at 7.30pm, on the fourth Monday of the month.

The dates and venues for the next meetings are as follows:

Monday 23rd March at 7.30pm at St John's Cononley

Monday 27th April at 7.30pm at St Mary's, Bradley

(Monday 25th May is a Bank Holiday)



Bradley School News

LEARN • INSPIRE • FLOURISH • ENGAGE

Drumba comes to Bradley's Both:

What a fantastic day we all had when the 'Drumba Workshop' came to school. The children and staff enjoyed a physical workout with Clare and Alec who visited school for the day to introduce Drumba to everyone. The hall was full of children with their drum sticks beating out the rhythm of music while exercising. We funded the day's workshops through our School's Sports Premium Funding which we receive to enhance the opportunities for the children to be physically active. Everyone enjoyed it.

Fund Raising:

As usual, during this last half-term our school council have been involved in a number of fund-raising events. The first of these was a non-uniform day to collect donations towards the fund for Luke Mortimer whose story has touched many hearts; we managed to raise £214 for this good cause.

We held a Valentine's Day bun sale to raise further funds to go towards our Malawi water pump project and at the start of this next half-term we are going to wear something green for the NSPCC and support The National Literacy Trust on World Book Day.

Village Hall Competition:

Following the Village Hall logo competition that has been ongoing for the last few weeks, David Snelson visited our celebration assembly today to award certificates to the children who entered and were shortlisted. It was fantastic to receive such positive feedback about all the designs.

David announced that following the weeks of voting, both at the Parish Council event and online, the winning design was the logo designed by Finn in Class 4! Congratulations to Finn, his design will be being made into a logo and used outside by the Village Hall trustees

Finally, some news from last November...



Wartime Memories:

Two Bradley residents (and members of St. Mary's Church) came into to school to visit Class 5 and tell of their childhood during World War 2.

Mrs Vera Greaves lived in Salford at the time of the Manchester Blitz and was evacuated to the countryside twice. It sounded like she had an amazing escape although it must have been difficult to be separated from her mother.

On the other hand, Mrs Dorothy Braime lived on the family farm where they had a German POW who came to work with them for a month. Dorothy spoke warmly about this time saying how he was accepted as an extra pair of hands and how he was welcomed to eat with the family; she even shared her sweet ration with him!



Dorothy and Vera with some of the members of Class 5

The children enjoyed hearing Vera and Dorothy's stories and felt that they had learnt such a lot from them and we are grateful to them both for giving up their time to come and see us.

We followed this with a class visit to The Imperial War Museum North to find out even more about our World War 2 History topic. Coincidentally, the museum is built very close to where Vera lived before their house was destroyed in a bombing raid.

Kildwick & Farnhill Institute 2021 Calendar competition

Following the tremendous success of the 2020 calendar, which was a sell-out, Kildwick and Farnhill Institute have opened the competition to find images for their 2021 Village Calendar.

Local amateur photographers are invited to send a maximum of three images of Kildwick or Farnhill, in landscape format, for possible inclusion in the calendar.

The closing date for submissions is 31st May 2020 and the successful images will be chosen anonymously by Institute committee members early in June. Full details of the competition can be found on the Calendar page of the Institute's website. You do not have to live in Farnhill or Kildwick to enter the competition.

Photographs should be submitted to KandFIInstitute@gmail.com.



In aid of



10.00am – 12 noon
Saturday 14th March

Parish Rooms
St Andrew's Church
Kildwick

Come along and help support Jigsaw's work with some of the poorest children and families in the Philippines

The Prayer Page

Lord, I will turn,
 Turn my face towards you.
 I will lay before you the desert areas I hide
 And turn to soak in your refreshing words of life.
 I will cast aside the barren, selfish pursuits
 And turn to rest in the tranquil warmth of your love.
 I will draw back from the harsh pull of media
 And turn to bathe in the gentle power of your Spirit.
 Lord, today I turn my face towards you.
 I will turn to soak in your words of life,
 To rest in the warmth of your love,
 And to bathe in the power of your Spirit.
 Amen

Almighty and Everlasting God,
 You have given the human race
 Jesus Christ our Saviour as a model of humility.
 He fulfilled Your Will by becoming Man
 And giving His life on the Cross.
 Help us to bear witness to You
 By following His example of suffering
 And make us worthy to share in His Resurrection.
 We ask this through our Lord
 Jesus Christ, Your Son.
 Amen.

Lord without You I can do nothing.
 By Your Spirit help me to know what is right
 and to be eager in doing Your will.
 Teach me to find new life through penance.
 Keep me from sin, and help me live
 by Your commandment of love.
 God of love, bring me back to You.
 Send Your Spirit to make me strong
 in faith and active in good works.
 May my acts of penance bring me Your
 forgiveness,
 open my heart to Your love,
 and prepare me for the coming feast
 of the Resurrection of Jesus.



The Birds in Your Garden



Spring is almost sprung, and my grass is definitely riz! It'll soon be the beginning of the nesting season when building and rebuilding begin again. Birds (I wonder where the boidies is?) will be looking for nesting sites and then searching for building materials. Mind you, some of the UK's bird species get started even before springtime, or, in the case of Wood Pigeons, probably never stopped.

The 'Bird Nesting Season' is officially from February until August, according to Natural England, and it is recommended that any hedge or tree work is done outside this period. Nesting may start before and extend beyond this period, but the busiest time for most nesting birds is from early March until the end of July.

Generally, birds which nest early in the season are in a stronger position to take advantage of the early resources - the early bird catches the worm. However, data from a national study conducted by the British Trust for Ornithology (BTO) shows that many species are now breeding up to a month earlier than they were in the 1960s in response to climate change.

Climate change affects different species in different ways, some coping better than others, causing the ecosystem to become unbalanced. This can lead to chicks needing to be fed before the insects they eat emerge, particularly in years when the weather changes



rapidly for the worse, as it can in early spring. The result is a low survival rate of chicks which can be catastrophic for single brood species.

Early breeders in a species tend to be at least a year old, and probably more. Their previous experience of life and of breeding gives them an advantage in the season to come. Last year's hatchlings have much still to learn. As well as breeding earlier, older birds generally have larger territories



with more consistent boundaries and acquire a mate more quickly than their youthful counterparts. I guess there have to be some positives to getting older!

Now that winter is fading (I hope I don't regret this statement – remember The Beast from the.....) we notice birds more as individuals. Blue Tits explore our garden nestboxes and become adopted as our 'own'. A Blackbird brings a stick to our hedge, and overnight, it becomes a neighbour. Birds become more recognisable once the breeding season arrives, as well as more obvious, and they begin to act in distinctive ways.

If you have a nest box, it's fascinating watching birds examining them and their surroundings in detail. Each species has its own preferences; some, like a straight flightpath in (tits) some like to be hidden away (Blackbirds and Robins). Yet others you really have to seek out (Wrens).

Robins are pretty much the only birds singing in winter: this morning I heard two singing against each other in my garden; but when precisely does a Robin's winter defence of its food territory become the spring defence of its breeding territory?

If you find the lives of our garden birds to be of interest, and would like to join in and count the feathered occupants of your garden, please contact me or visit the BTO Garden BirdWatch website (www.bto.org/gbw). If you know of an organisation up to 30 miles from York which would like a talk on garden birds call: Mike Gray 07596 366342 or gbwmike@gmail.com.

back up the pump



The new vicar is really cool, Dad!
Did you know that God emailed the Ten Commandments
to Moses' tablet?

April 2020

The deadline for the April edition is Sunday 22nd March

Please let us have your material by then
– and we'll try to have the magazine ready for Sunday, 29th March.

Some material in this publication is © Parish Pump